

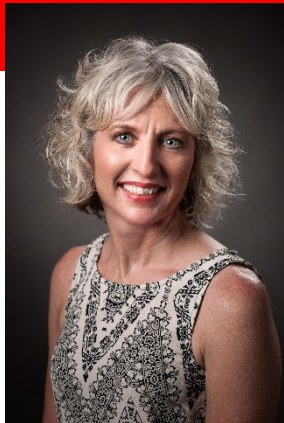


SPECIAL OLYMPICS MISSOURI Southwest Area NEWSLETTER

February 2022

Message from Program Director Jana Fornelli

Happy 2022! I am looking forward to another fantastic year in the SW SOMO area. Make sure to join the **Special Olympics Missouri SW Area** Facebook group so we can stay in touch frequently!



HIGHLIGHTS

It was very disappointing to cancel Basketball due to COVID but we are hopeful teams can participate in local basketball tournaments and/or Regional Basketball in February.

Class A forms

Submit your Class A forms online now!

<https://form.jotform.com/SpecialOlympicsMO/ClassA-application> – for ages over 18

<https://form.jotform.com/SpecialOlympicsMO/minor-class-a-volunteer-application> - for ages under 18

These links are on our website at: <https://somo.org/unifiedsports/>

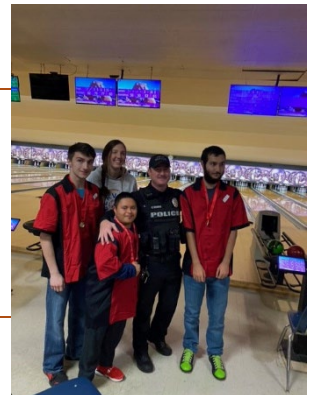
Inclusion Workshop

Join Carthage High School on February 28 for the Inclusion Workshop for Educators. Registration fee is \$25 and includes breakfast, lunch, t-shirt and a fun filled learning day! Learn how to grow your Special Olympics Program and build inclusion in your school. Registration 8:30-9:00 AM and we will be wrapped up by 2:30.

Register now at:

<https://form.jotform.com/SpecialOlympicsMO/inclusion-workshop-registration-for>

“You never change things by fighting the existing reality. To change something, build a new model that makes the existing model obsolete.”
– Buckminster Fuller



AREA UPDATES

Springfield Polar Plunge – March 5th is the date for the Springfield Polar Plunge. All plungers must raise a minimum of \$75. Full details are available at [2022 Polar Plunge Springfield - Special Olympics Missouri \(somo.org\)](https://www.somo.org/2022-Polar-Plunge-Springfield)

Please help us promote the Plunge in YOUR school and in YOUR community!

Special Olympics Missouri



Feb 5	Stevie Lane Classic	Carl Junction - kblackford@cjr1.org to register
Feb 12	Regional Basketball	St. Joseph, MO
Feb 19	Regional Basketball	St. Charles, MO
Feb 26	Nevada Basketball Tournament	Nevada, MO
	To register email: bonniefranklin@nevada.k12.mo.us	
March 4-5	Super Plunge	Springfield
March 5	Polar Plunge	Springfield
Mar 18-19	State Basketball	St. Charles, MO
Mar 25-17	Athlete Leadership Program	Jefferson City, MO
April 2	Powerlifting	CrossFit Republic
April 12	Local Track Meet	Carthage High School (April 13 rain date)
April 27	SW Area Spring Games	Clever
April 29	SW Area Spring Games	Carl Junction
May TBA	Local Track Meet	McDonald County High School
May 11	Inclusion Revolution	Stockton High School – Tentative date
May 20-22	State Summer Games	Columbia
August 8	SW Golf	Carthage
Oct TBA	Flag Football Clinic/Scrimmage	Lamar High School
Oct 7-9	State Outdoor Games	Jefferson City

IMPORTANT RESOURCES:

Need rules and sports info? <https://somo.org/sports/>

Need Class A forms or Unified Sports Partner Forms? <https://somo.org/unifiedsports/>

Are you interested in becoming an Athlete Leader? <https://somo.org/alps/>

CONTACT STAFF INFORMATION

Jana Fornelli

Program Manager

(417)-624-5505

fornelli@somo.org

P.O. Box 140 Duenweg, MO 64841